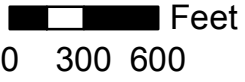


**Hinesburg Official Map
DRAFT REVISIONS**



1 inch = 775 feet
(at 11"x17" map size)



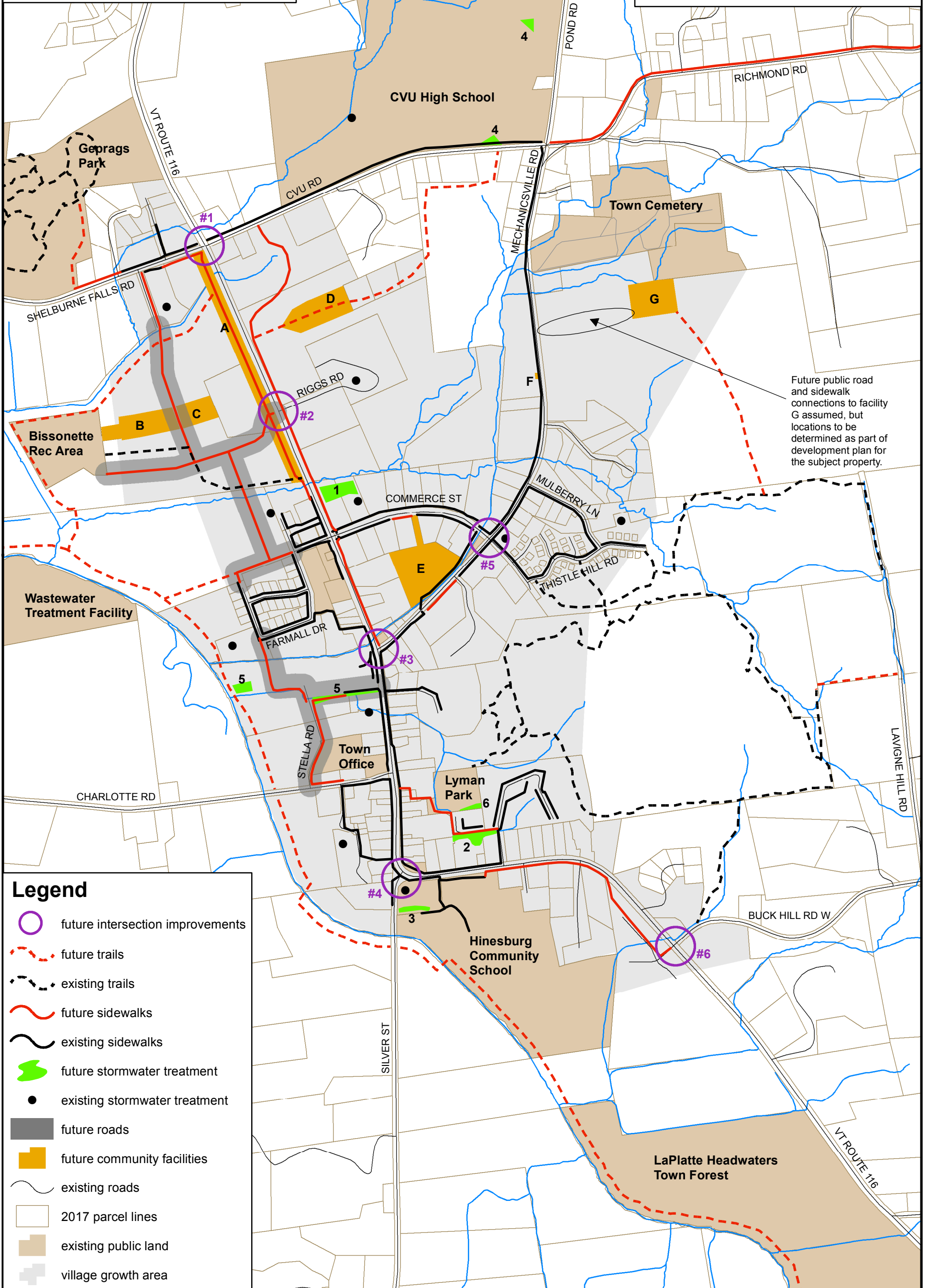
map date 9/14/2018
by Hinesburg Planning & Zoning

**DRAFT 5
(for community input)**

See Community Facility Description Document for details on future intersection improvements, community facilities A-G, and future stormwater treatment locations.

Locations for future improvements approximate only. Implementation or acceptance of specific elements is at the discretion of the Select Board.

Future roads will not occupy entire 200' wide buffer shown. Buffer intended to allow for non-linear road layout for slower speeds on new neighborhood, village connections.



Future public road and sidewalk connections to facility G assumed, but locations to be determined as part of development plan for the subject property.

Legend

-  future intersection improvements
-  future trails
-  existing trails
-  future sidewalks
-  existing sidewalks
-  future stormwater treatment
-  existing stormwater treatment
-  future roads
-  future community facilities
-  existing roads
-  2017 parcel lines
-  existing public land
-  village growth area