

## Spillman Demographics Summary Report

Agency = HINESBURG PD    Date Range: 01/01/2017-12/31/2017

### AGE Distribution

<u>AGE Range</u>	<u>Female</u>	<u>Male</u>	<u>Overall</u>
0 to 4	0	0	0
5 to 9	0	0	0
10 to 14	0	0	0
15 to 19	46	90	136
20 to 24	59	102	161
25 to 29	96	125	221
30 to 34	62	127	189
35 to 39	58	80	138
40 to 44	82	99	181
45 to 49	62	101	163
50 to 54	70	106	176
55 to 59	48	83	131
60 to 64	42	75	117
65 to 69	26	53	79
70 to 74	14	23	37
75 to 79	5	25	30
80 to 84	2	5	7
85 to 89	1	1	2
90 to 94	0	0	0
95 to 99	0	0	0
<b>TOTALS</b>	<b>673</b>	<b>1095</b>	<b>1768</b>

### RACE Distribution

<u>RACE</u>	<u>Female</u>	<u>Male</u>	<u>Unknown</u>	<u>Overall</u>	<u>RACE Percent in Gender</u>			
					<u>Female</u>	<u>Male</u>	<u>Unknown</u>	<u>Overall</u>
Asian or Pacific Islander	5	9	0	14	0.7%	0.8%	0.0%	0.8%
Black	7	22	0	29	1.0%	2.0%	0.0%	1.6%
Hispanic	5	2	0	7	0.7%	0.2%	0.0%	0.4%
Native American or Alaskan Native	0	0	0	0	0.0%	0.0%	0.0%	0.0%
White	656	1062	0	1718	97.5%	97.0%	0.0%	97.2%
<b>TOTALS for Gender</b>	<b>673</b>	<b>1095</b>	<b>0</b>	<b>1768</b>	<b>% by Gender</b>	<b>38.1%</b>	<b>61.9%</b>	<b>0.0%</b>

Agency = HINESBURG PD Date Range: 01/01/2017-12/31/2017

### CONTACT vs RACE Distribution

CONTACT	RACE Categories - Counts							CONTACT Percent in RACE					
	Asian	Black	Hispanic	Native	White	Overall		Asian	Black	Hispanic	Native	White	Overall
Suspicion of DUI	0	0	0	0	5	5		0.0%	0.0%	0.0%	0.0%	0.3%	0.3%
Externally Generated Stop	0	1	1	0	113	115		0.0%	3.4%	14.3%	0.0%	6.6%	6.5%
Investigatory Stop	0	0	0	0	74	74		0.0%	0.0%	0.0%	0.0%	4.3%	4.2%
Moving Violation	14	27	5	0	1447	1493		100.0%	93.1%	71.4%	0.0%	84.2%	84.4%
Vehicle Equipment	0	1	1	0	78	80		0.0%	3.4%	14.3%	0.0%	4.5%	4.5%
Other Violation	0	0	0	0	1	1		0.0%	0.0%	0.0%	0.0%	0.1%	0.1%
<b>TOTALS for RACE</b>	<b>14</b>	<b>29</b>	<b>7</b>	<b>0</b>	<b>1718</b>	<b>1768</b>	<b>% by RACE</b>	<b>0.8%</b>	<b>1.6%</b>	<b>0.4%</b>	<b>0.0%</b>	<b>97.2%</b>	

### SEARCH ACTION vs RACE Distribution

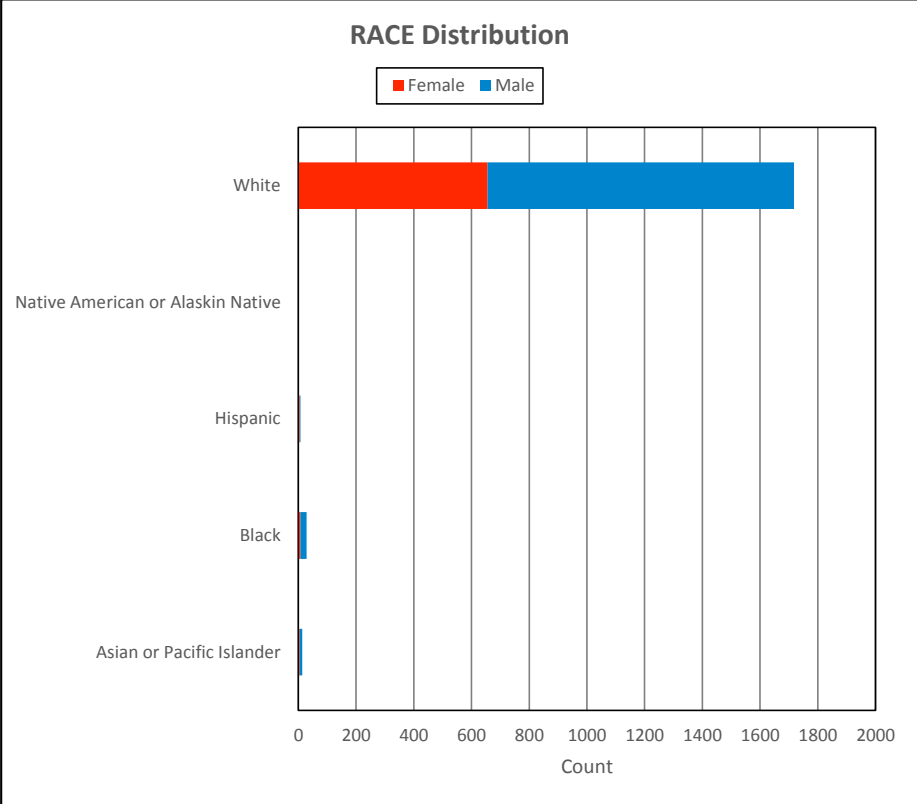
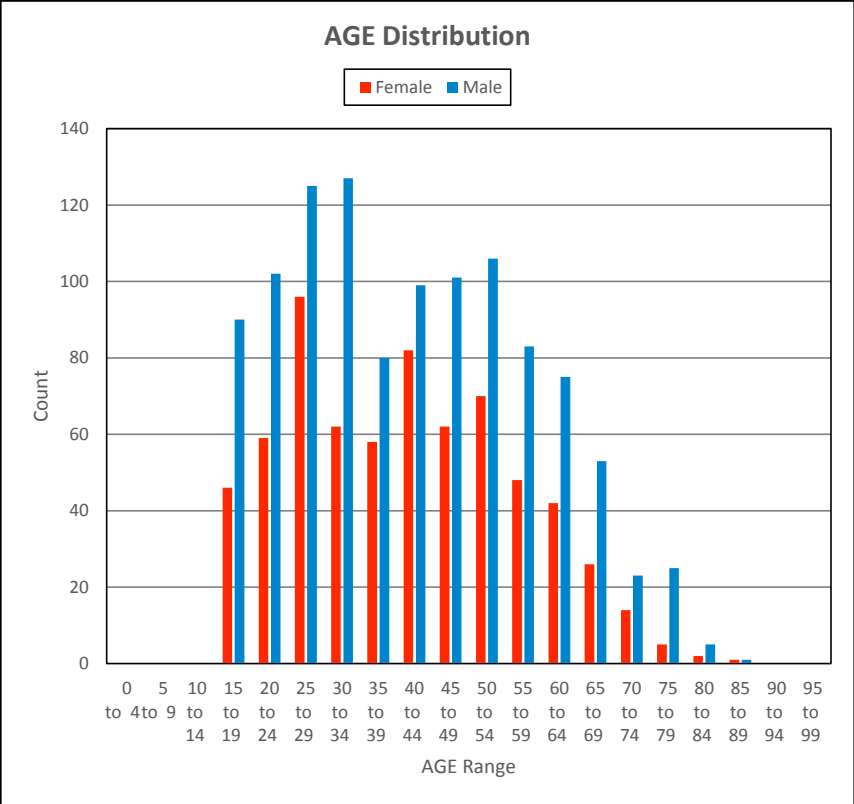
SEARCH ACTION	RACE Categories - Counts							ACTION Percent in RACE					
	Asian	Black	Hispanic	Native	White	Overall		Asian	Black	Hispanic	Native	White	Overall
No Search Conducted	14	29	7	0	1715	1765		100.0%	100.0%	100.0%	0.0%	99.8%	99.8%
Consent Search-Probable Cause	0	0	0	0	2	2		0.0%	0.0%	0.0%	0.0%	0.1%	0.1%
Consent Search-Reasonable Suspicion	0	0	0	0	1	1		0.0%	0.0%	0.0%	0.0%	0.1%	0.1%
Search with Warrant	0	0	0	0	0	0		0.0%	0.0%	0.0%	0.0%	0.0%	0.0%
<b>TOTALS for RACE</b>	<b>14</b>	<b>29</b>	<b>7</b>	<b>0</b>	<b>1718</b>	<b>1768</b>	<b>% by RACE</b>	<b>0.8%</b>	<b>1.6%</b>	<b>0.4%</b>	<b>0.0%</b>	<b>97.2%</b>	

### OUTCOME vs RACE Distribution

OUTCOME	RACE Categories - Counts							OUTCOME Percent in RACE					
	Asian	Black	Hispanic	Native	White	Overall		Asian	Black	Hispanic	Native	White	Overall
Arrest for Violation	0	0	0	0	0	0		0.0%	0.0%	0.0%	0.0%	0.0%	0.0%
Arrest on Warrant	0	0	0	0	0	0		0.0%	0.0%	0.0%	0.0%	0.0%	0.0%
No Action Taken	0	0	0	0	21	21		0.0%	0.0%	0.0%	0.0%	1.2%	1.2%
Ticket/VCVC Issued	7	16	5	0	850	878		50.0%	55.2%	71.4%	0.0%	49.5%	49.7%
Verbal Warning Issued	7	13	2	0	836	858		50.0%	44.8%	28.6%	0.0%	48.7%	48.5%
Written Warning Issued	0	0	0	0	11	11		0.0%	0.0%	0.0%	0.0%	0.6%	0.6%
<b>TOTALS for RACE</b>	<b>14</b>	<b>29</b>	<b>7</b>	<b>0</b>	<b>1718</b>	<b>1768</b>	<b>% by RACE</b>	<b>0.8%</b>	<b>1.6%</b>	<b>0.4%</b>	<b>0.0%</b>	<b>97.2%</b>	

### EVIDENCE vs RACE Distribution

EVIDENCE	RACE Categories - Counts							EVIDENCE Percent in RACE					
	Asian	Black	Hispanic	Native	White	Overall		Asian	Black	Hispanic	Native	White	Overall
Contraband/Evidence Found	0	0	0	0	2	2		0.0%	0.0%	0.0%	0.0%	0.1%	0.1%
No Contraband/Evidence Found	0	0	0	0	1	1		0.0%	0.0%	0.0%	0.0%	0.1%	0.1%
Not Applicable/No Search	14	29	7	0	1715	1765		100.0%	100.0%	100.0%	0.0%	99.8%	99.8%
<b>TOTALS for RACE</b>	<b>14</b>	<b>29</b>	<b>7</b>	<b>0</b>	<b>1718</b>	<b>1768</b>	<b>% by RACE</b>	<b>0.8%</b>	<b>1.6%</b>	<b>0.4%</b>	<b>0.0%</b>	<b>97.2%</b>	



Agency = HINESBURG PD Date Range: 01/01/2017-12/31/2017

