

Spillman Demographics Summary Report

Agency = HINESBURG PD Date Range: 01/03/2018-12/31/2018

AGE Distribution

<u>AGE Range</u>	<u>Female</u>	<u>Male</u>	<u>Transgender</u>
0 to 4	0	0	0
5 to 9	0	0	0
10 to 14	0	0	0
15 to 19	45	52	0
20 to 24	65	88	0
25 to 29	68	96	0
30 to 34	69	108	0
35 to 39	47	103	0
40 to 44	51	80	0
45 to 49	53	84	0
50 to 54	52	68	0
55 to 59	44	75	0
60 to 64	34	59	0
65 to 69	26	37	0
70 to 74	7	20	0
75 to 79	3	7	0
80 to 84	0	6	0
85 to 89	0	1	0
90 to 94	1	0	0
95 to 99	0	0	0
TOTALS	565	884	0

RACE Distribution

<u>RACE</u>	<u>Female</u>	<u>Male</u>	<u>Transgender</u>	<u>Unknown</u>
Asian or Pacific Islander	6	10	0	0
Black	10	21	0	0
Hispanic	1	2	0	0
Native American or Alaskan Native	0	1	0	0
<u>White</u>	<u>548</u>	<u>850</u>	<u>0</u>	<u>0</u>
TOTALS for Gender	565	884	0	0

RACE Percent in Gender

<u>Female</u>	<u>Male</u>	<u>Transgender</u>	<u>Unknown</u>
1.1%	1.1%	0.0%	0.0%
1.8%	2.4%	0.0%	0.0%
0.2%	0.2%	0.0%	0.0%
0.0%	0.1%	0.0%	0.0%
<u>97.0%</u>	<u>96.2%</u>	<u>0.0%</u>	<u>0.0%</u>
% by Gender	39.0%	61.0%	0.0%

CONTACT vs RACE Distribution

CONTACT	RACE Categories - Counts						CONTACT Percent in RACE					
	Asian	Black	Hispanic	Native	White	Overall	Asian	Black	Hispanic	Native	White	Overall
Suspicion of DUI	0	0	0	0	0	0	0.0%	0.0%	0.0%	0.0%	0.0%	0.0%
Externally Generated Stop	0	0	0	0	2	2	0.0%	0.0%	0.0%	0.0%	0.1%	0.1%
Investigatory Stop	0	0	0	0	12	12	0.0%	0.0%	0.0%	0.0%	0.9%	0.8%
Moving Violation	15	29	1	1	1241	1287	93.8%	93.5%	33.3%	100.0%	88.8%	88.8%
Vehicle Equipment	1	2	2	0	140	145	6.3%	6.5%	66.7%	0.0%	10.0%	10.0%
Other Violation	0	0	0	0	3	3	0.0%	0.0%	0.0%	0.0%	0.2%	0.2%
TOTALS for RACE	16	31	3	1	1398	1449	% by RACE	1.1%	2.1%	0.2%	0.1%	96.5%

SEARCH ACTION vs RACE Distribution

SEARCH ACTION	RACE Categories - Counts						ACTION Percent in RACE					
	Asian	Black	Hispanic	Native	White	Overall	Asian	Black	Hispanic	Native	White	Overall
No Search Conducted	16	31	3	1	1393	1444	100.0%	100.0%	100.0%	100.0%	99.6%	99.7%
Consent Search-Probable Cause	0	0	0	0	5	5	0.0%	0.0%	0.0%	0.0%	0.4%	0.3%
Consent Search-Reasonable Suspicion	0	0	0	0	0	0	0.0%	0.0%	0.0%	0.0%	0.0%	0.0%
Search with Warrant	0	0	0	0	0	0	0.0%	0.0%	0.0%	0.0%	0.0%	0.0%
TOTALS for RACE	16	31	3	1	1398	1449	% by RACE	1.1%	2.1%	0.2%	0.1%	96.5%

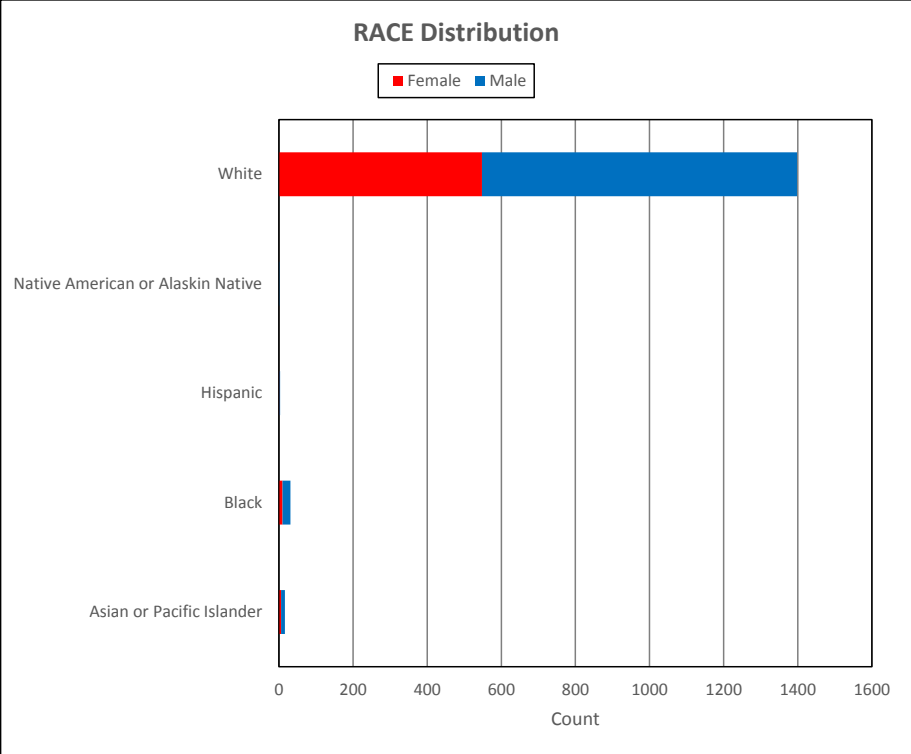
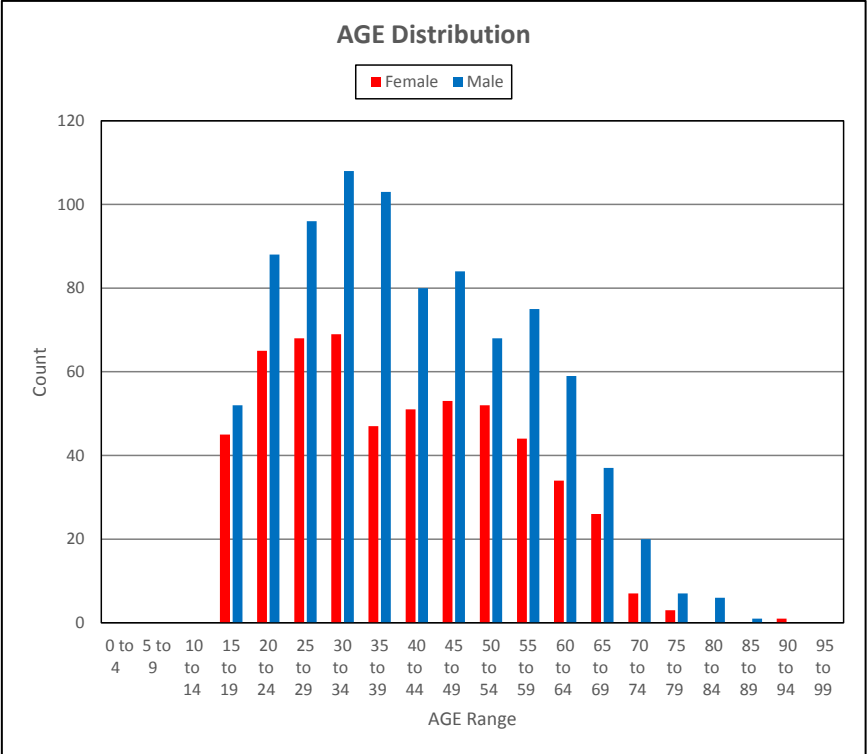
OUTCOME vs RACE Distribution

OUTCOME	RACE Categories - Counts						OUTCOME Percent in RACE					
	Asian	Black	Hispanic	Native	White	Overall	Asian	Black	Hispanic	Native	White	Overall
Arrest for Violation	0	0	0	0	9	9	0.0%	0.0%	0.0%	0.0%	0.6%	0.6%
Arrest on Warrant	0	0	0	0	0	0	0.0%	0.0%	0.0%	0.0%	0.0%	0.0%
No Action Taken	0	0	0	0	3	3	0.0%	0.0%	0.0%	0.0%	0.2%	0.2%
Ticket/VCVC Issued	10	14	3	1	752	780	62.5%	45.2%	100.0%	100.0%	53.8%	53.8%
Verbal Warning Issued	6	17	0	0	628	651	37.5%	54.8%	0.0%	0.0%	44.9%	44.9%
Written Warning Issued	0	0	0	0	6	6	0.0%	0.0%	0.0%	0.0%	0.4%	0.4%
TOTALS for RACE	16	31	3	1	1398	1449	% by RACE	1.1%	2.1%	0.2%	0.1%	96.5%

EVIDENCE vs RACE Distribution

EVIDENCE	RACE Categories - Counts						EVIDENCE Percent in RACE					
	Asian	Black	Hispanic	Native	White	Overall	Asian	Black	Hispanic	Native	White	Overall
Contraband/Evidence Found	0	0	0	0	2	2	0.0%	0.0%	0.0%	0.0%	0.1%	0.1%
No Contraband/Evidence Found	0	0	0	0	3	3	0.0%	0.0%	0.0%	0.0%	0.2%	0.2%
Not Applicable/No Search	16	31	3	1	1393	1444	100.0%	100.0%	100.0%	100.0%	99.6%	99.7%
TOTALS for RACE	16	31	3	1	1398	1449	% by RACE	1.1%	2.1%	0.2%	0.1%	96.5%

Agency = HINESBURG PD Date Range: 01/03/2018-12/31/2018



Agency = HINESBURG PD Date Range: 01/03/2018-12/31/2018

